

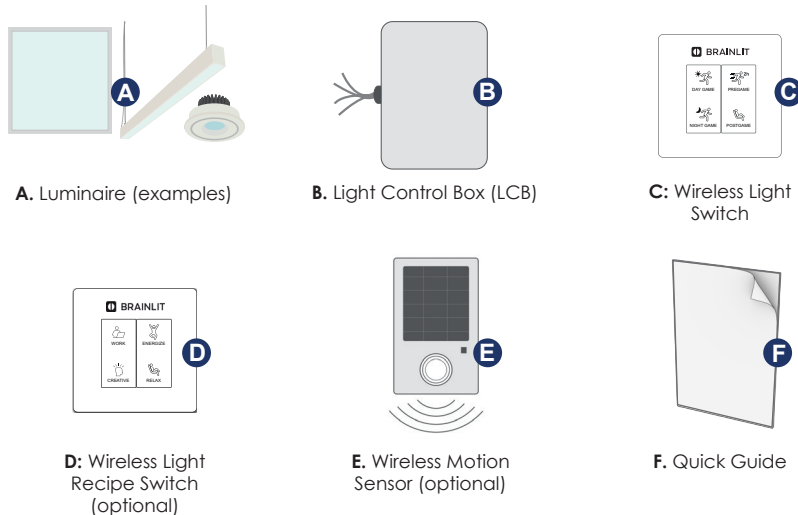
# QUICK GUIDE

## BrainLit ELVEN US

### Welcome to the world of Biocentric lighting

Access to daylight and its variations is crucial for maintaining a balanced circadian rhythm. In modern life, most of us spend the majority of our time indoors, exposed to static and insufficient light, which prevents us from receiving the amount of daylight necessary to fulfill our biological needs. BrainLit's Biocentric lighting system recreates daylight indoors by mimicking the most important aspects of daylight, helping you maintaining a healthy circadian rhythm.

#### Components included



#### Step 1

Mount luminaire(s) (A) according to Luminaire Installation Instruction and fixate the Light Control Box (B) above the suspended ceiling, or in a location per the client's preference that has access to 110-120V power and is no more than 490 linear feet from the furthest luminaire, or 32 linear feet from the furthest Wireless Motion Sensor (E).

#### Step 2

Connect luminaire(s) (A) of first zone and Light Control Box (B) using 2-conductor 18 AWG (Up to 492ft supplied separately).

#### Step 3

Turn on power to the Light Control Box (B) and the luminaires in the first zone. The luminaires light up and the system starts up. After approximately 1 minute the luminaires start to pulse light and the system is ready to pair.

#### Step 4

Press upper left button on the Wireless Light Switch (C). When the luminaires stop pulsing the switch is paired with the luminaires.

#### Step 5

Mount the Wireless Light Switch (C) on the wall using either the enclosed double-sided tape or fix the switch to the wall using screws.

#### Installation of additional zones:

#### Step 6

Mount the luminaire(s) (A) in the new zone and connect them to the Light Control Box (B) using 2-conductor 18 AWG cables. Power up the luminaires.

#### Step 7

Press upper left button 5 times on an installed Wireless Light Switch (C) or LRN button on an installed Wireless Motion Sensor (E) to activate pairing mode. The system will search for new luminaires. When found the new luminaires will pulse to confirm pairing mode.

#### Step 8

Press upper left button on the Wireless Light Switch (C) that shall control the new luminaires. When luminaires stop pulsing the Wireless Light Switch (C) is paired with the new luminaires. Repeat step 6-8 for all additional zones.

For installation of Wireless Motion Sensors (E) and Wireless Light Recipe Switches (D), see next page.



## Timezone configuration

To ensure that your Biocentric lighting system provides you with the right light at the right time, it is essential to configure it with the correct time zone. By default, the system is set to Central European Time, which includes automatic adjustment for daylight saving time.

## Internet connection

When you set up an Internet connection, the system is enabled for updates of software and light recipes developed by BrainLit, based on the latest research.

### Configure timezone and internet connection

#### Step 1

Press lower left button 5 times on the Wireless Light Switch (C) to enable the BrainLit configuration WiFi. On the 5th button press the luminaire(s) light up indicating the configuration WiFi is active and will remain active for 10 minutes.

#### Step 2

Connect to the BrainLit configuration WiFi by scanning the QR code on the Light Control Box (B).

Or

Connect to the BrainLit configuration WiFi  
SSID: brainlit-xxxx-xxxx  
Password: 12345678  
Open a browser and navigate to <http://192.168.47.1>

#### Step 3

Select Configuration Wizard and complete the configuration by following the instructions in the web page.



Scan the QR code for more documentation.

## Install additional Light Control Box

If the Biocentric light system is controlled by one or more Light Control Box, each of the units should be connected via ethernet to a common switch or router capable of providing DHCP addressing.

## Optional devices

A Wireless Light Recipe Switch (D) provides additional light recipes specifically for an office: Work, Creative, Energize and Relax.

A Wireless Motion Sensor (E) offers the benefits of increased automation and therefore a reduced power consumption.

### Install Wireless Light Recipe Switch (D) (optional)

#### Step 1

Press upper left button 5 times on the Wireless Light Switch (C) to activate pairing mode. The luminaires start to pulse when the system is in pairing mode.

#### Step 2

Press the upper right button on the Wireless Light Recipe Switch (D) to pair it. When the luminaires stop pulsing the recipe switch is paired with the luminaires.

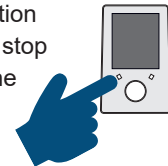
### Install Wireless Motion Sensor (E) (optional)

#### Step 1

Press upper left button 5 times on the Wireless Light Switch (C) to activate pairing mode. The luminaires start to pulse when the system is in pairing mode.

#### Step 2

Press the LRN button on the Wireless Motion Sensor (E) to pair it. When the luminaires stop pulsing the motion sensor is paired with the luminaires.



## Congratulations!

Your Biocentric lighting system is now ready to be used. Read more about how to manage the light in the User Instruction.

